

# Assembling the Desktop Ganzfeld Stand



## Diagnosys LLC

410 Great Road  
Suite 6  
Littleton, MA 01460  
Phone: (978) 486-9797  
Fax: (978) 486-4677

# Supplied Parts List

Item	Part no.	Desktop mount assembly	Qty
1	11691	Column including crank mechanism	1
2	11683	Column dress dome	1
3	11728	Horizontal arm assembly	1
4	11535	Arm ball mount assembly	1
5	11674	Arm ball mount base plate	1
6	11676	Aluminum friction plate	1
7	11677	Aluminum friction well cover	1
8	11681	Nylon friction washer (with hole)	1
9	11679	Nylon friction washer (without hole)	1
10	11697	Black 6-32 x 1/2" screws	8
11	11690	Silver 10-32x1/2" screws	4
12	11692	Black 3/8-16x3/4" screw	1

Item	Part no.	Chinrest assembly	Qty
13	11693	Chin-rest	1
14	11686	Chin-rest post holder	1
15	11685	Chin-rest steel post	1
16	11688	Chin-rest post screw to base	1
17	11687	Chin-rest post washer	1
18	11618	Chin-rest stud to connect chinrest to post	1
19	11687	Chin-rest washer	1

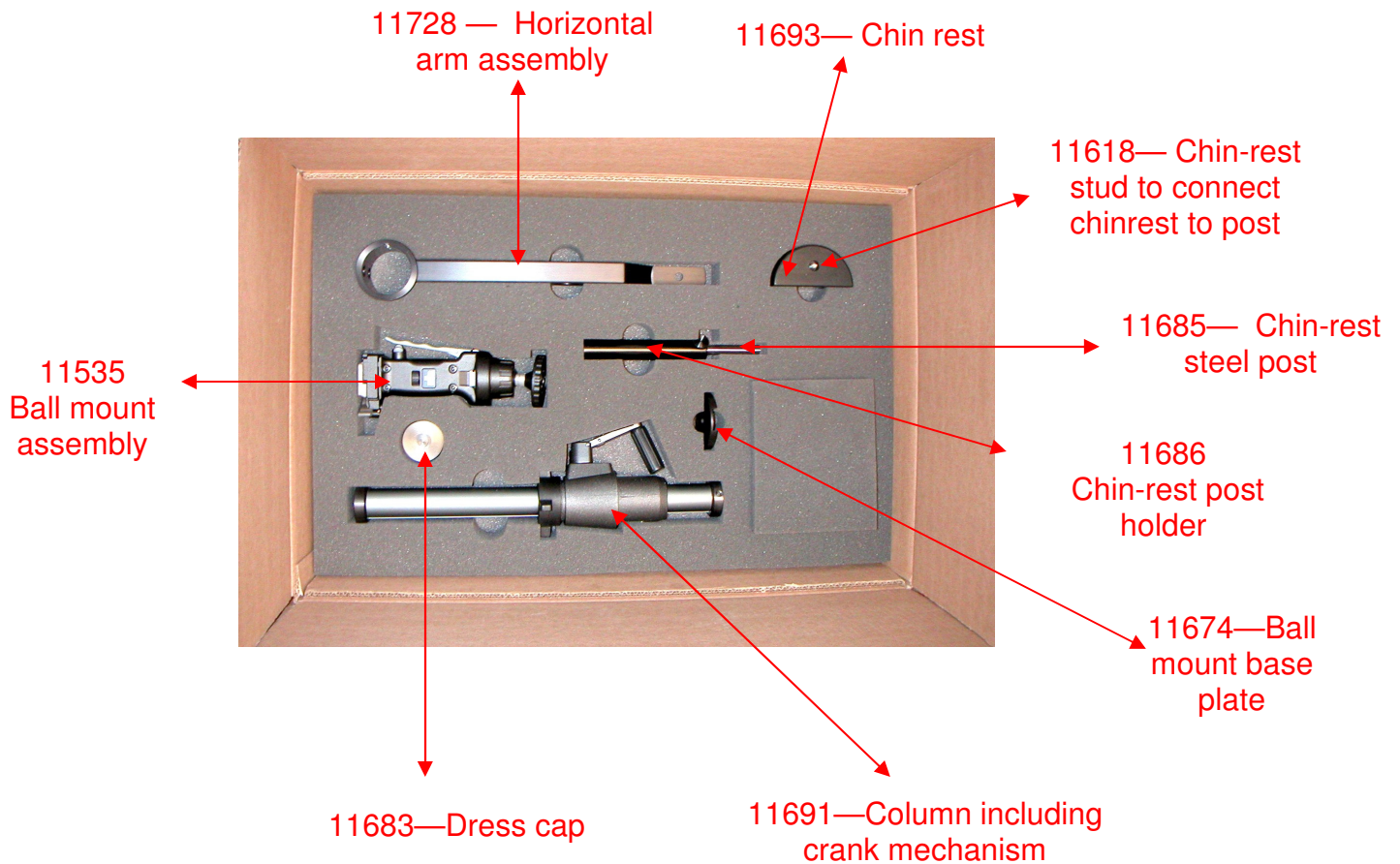
Item	Part no.	Baseplate assembly	Qty
20	11678	Baseplate	1
21	11659	Rubber feet	6
22	11126	Rubber feet fixing screws, 6-32 x 1/2"	6
23	11684	Friction lock knob	1

Item	Part no.	Tools supplied	Qty
24	11731	Allen key for item 12	1
25	11732	Allen key for set screws in column	1
26	11733	Allen key for item 10	1
27	11734	Right angle Philips/flat blade screwdriver	1

**Note:**

- Baseplate assembly normally supplied pre-assembled
- Items 14 and 15 supplied already fitted together

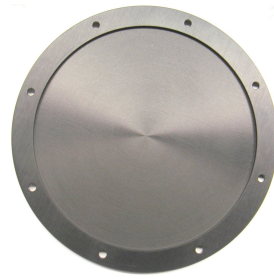
# Supplied Parts List



11681 — Nylon friction washer (with hole)



11676 — Aluminum friction plate



11677 — Aluminum friction well cover



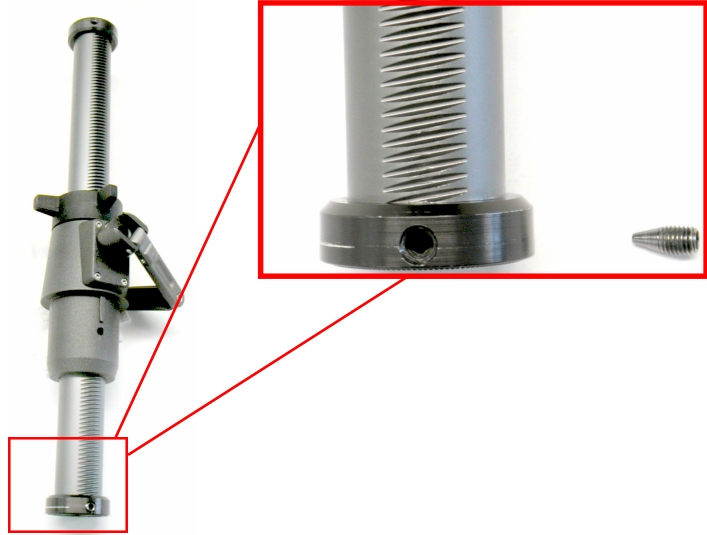
11681 — Nylon friction washer (without hole)

# Assembling the Stand

## Step 1

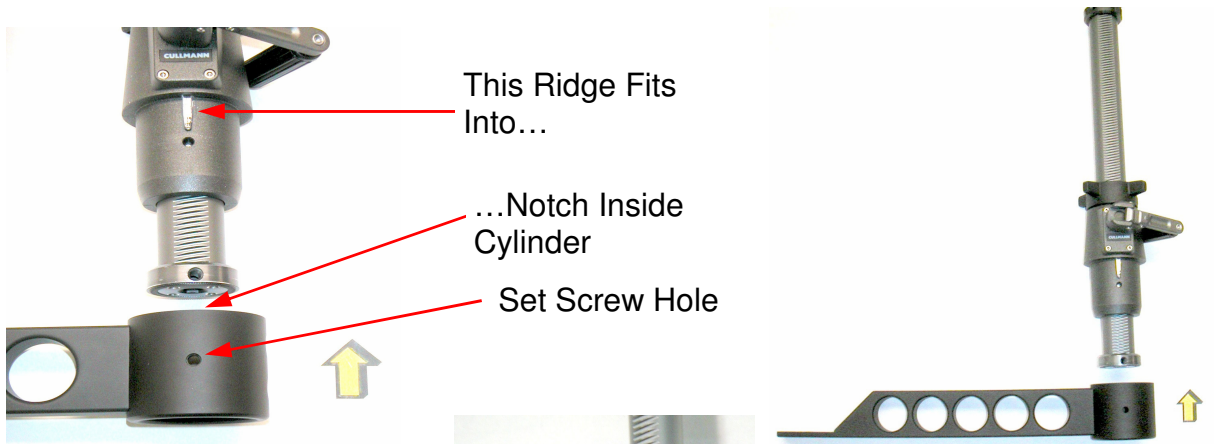
Remove set screw from the bottom of the support column (11691).

*Note: Be sure you have the bottom of the column!*



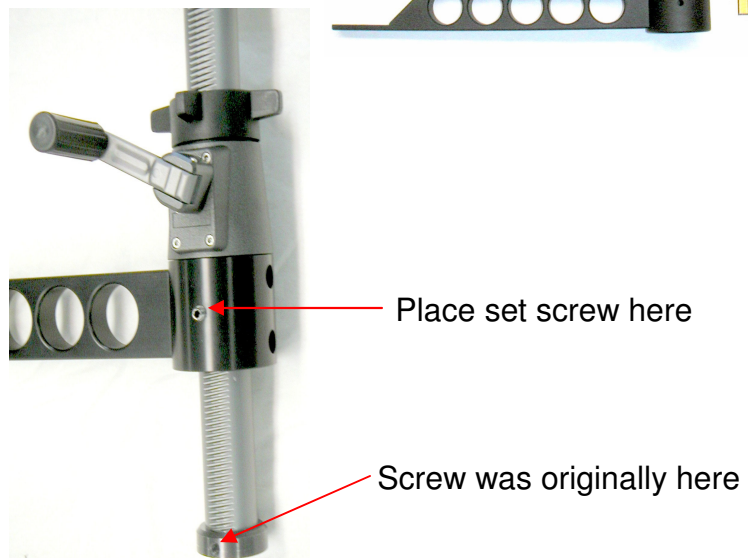
## Step 2

Align support arm assembly (11728) with column as shown and slide arm over column.



## Step 3

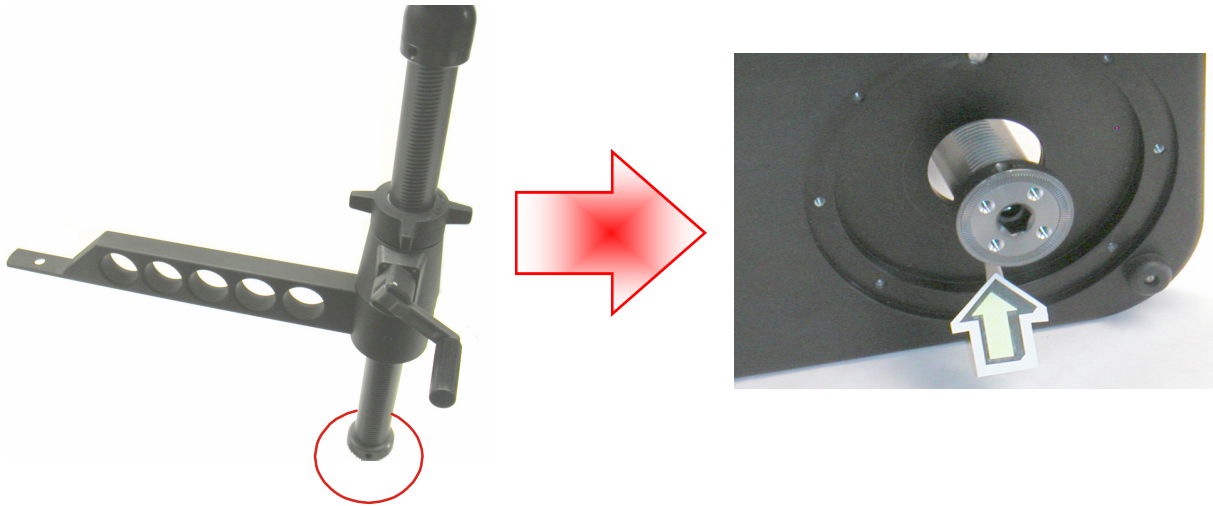
Place the set screw **taken** from the base of the support column in the screw hole of the arm and tighten firmly.



# Assembling the Stand

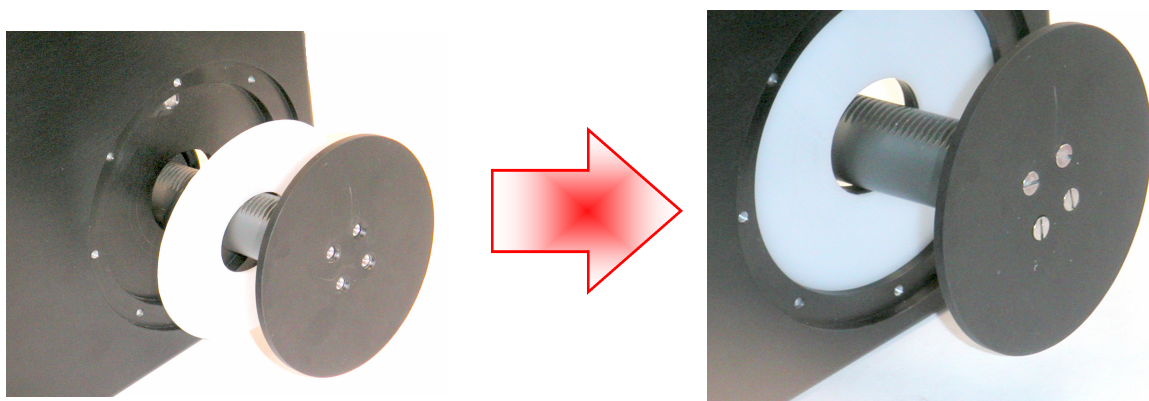
## Step 4

Insert the bottom of the stand arm through the hole in the top right of the base. We recommend that you stand the base on end, with the bottom towards you and the hole in the base at the bottom right.



## Step 5

Insert the white nylon ring (11681) and round black friction plate (11676) over the bottom of the arm (bottom left) and insert 4 (11690) screws as shown. Tighten very firmly.



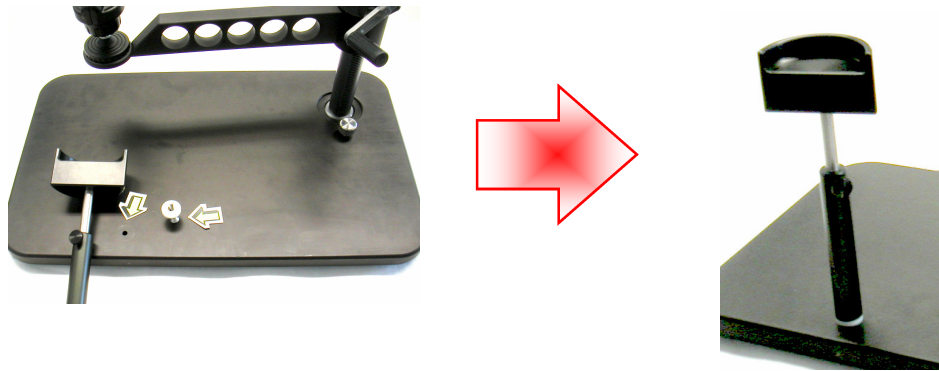
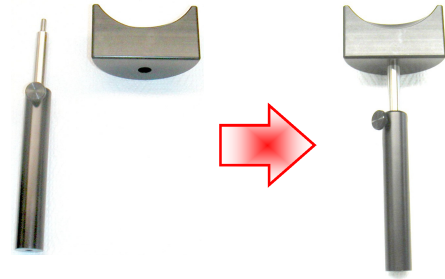


# Assembling the Stand

## Step 8

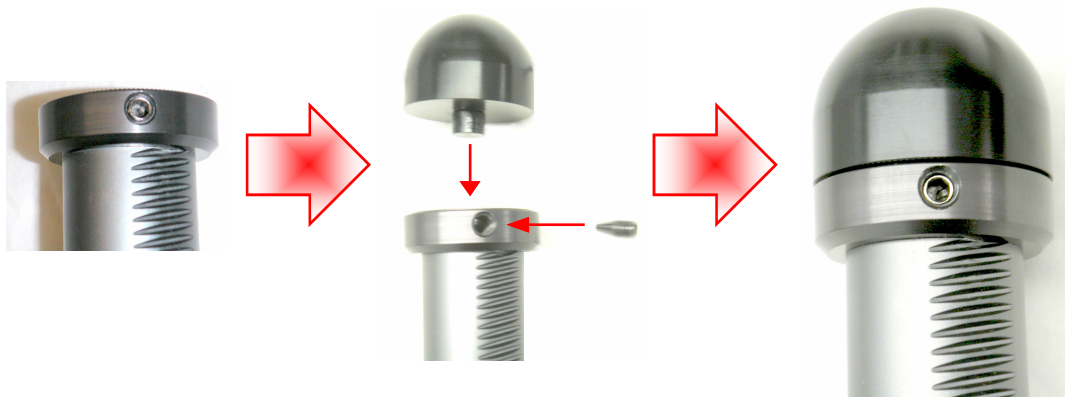
Screw the chinrest tightly (11693) onto the chinrest post (11685) with the stud (11618) . See right photo. Next screw the completed chinrest post assembly onto the baseplate (11678) with the (11688) screw and washer (11687).

NOTE: Make sure the washer is between the chinrest and the base! .



## Step 9

Remove the set screw from the top of the support column. Insert the dress cap (11683) stem into the receiver on top of the support column, and replace the set screw.



**Congratulations!**  
**Your completed stand should look like this**

